



ORCID PROVIDER 00123M



adelaide.edu.au

## HIV in Myanmar

Mark Boyd

Chair of Medicine/Professorial Fellow

University of Adelaide/UNSW

ICTMM  
21 Sept 2016*seek* LIGHT

## HIV in Myanmar

### Outline

- Socio-economic context
- Epidemiology
- HIV cascade
- Testing
- Treatment
- Barriers
- Conclusions





# HIV in Myanmar



## Outline

- Socio-economic context
- Epidemiology
- HIV cascade
- Testing
- Treatment
- Barriers
- Conclusions

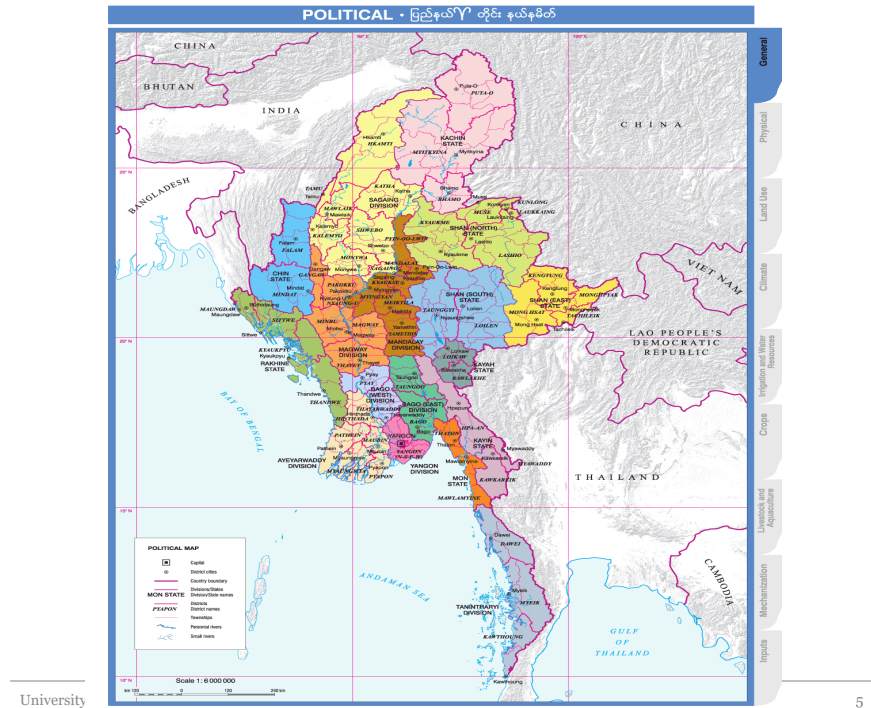
# Myanmar



## BASIC SOCIO-DEMOGRAPHIC INDICATORS

Total population (thousands)	53,719
Annual population growth rate	0.8
Population aged 15-49 (thousands)	30,647
Percentage of population in urban areas	33
Crude birth rate (births per 1,000 population)	17.4
Under-5 mortality rate (per 1,000 live births)	52
Human development index (HDI) - Rank/Value	144/0.536
Life expectancy at birth (years)	65.2
Adult literacy rate (%)	92.7 (2005-2012)
Ratio of girls/boys in 1 <sup>o</sup> and 2 <sup>o</sup> education (%)	101
GDP per capita (PPP, \$US)	1,126
Per capita total health expenditure (Int.\$)	23





## HIV in Myanmar



### Outline

- Socio-economic context
- **Epidemiology**
- HIV cascade
- Testing
- Treatment
- Barriers
- Conclusions

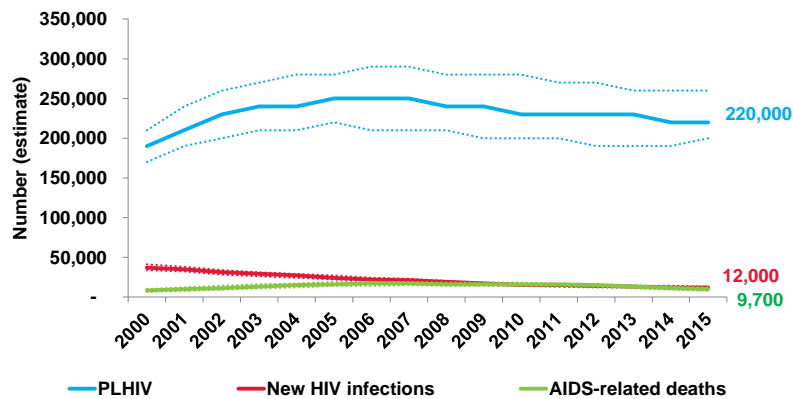


## Adults and children estimated to be living with HIV | 2015



**Total: 36.7 million** [34.0 million – 39.8 million]

## Estimated number of people living with HIV, new HIV infections and AIDS-related deaths, 2000-2015

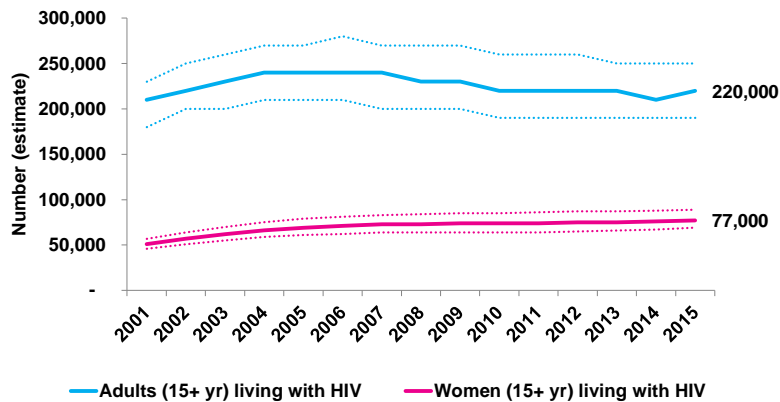


Source: Prepared by [www.aidsdatahub.org](http://www.aidsdatahub.org) based on UNAIDS. (2016). HIV Estimates 2000-2015

8



## Estimated number of adults (15+) living with HIV and women (15+) living with HIV, 2000-2015



Source: Prepared by [www.aidsdatahub.org](http://www.aidsdatahub.org) based on UNAIDS. (2016). HIV Estimates 2000-2015.

9

## HIV in Myanmar

HIV prevalence among populations in Myanmar (2015)



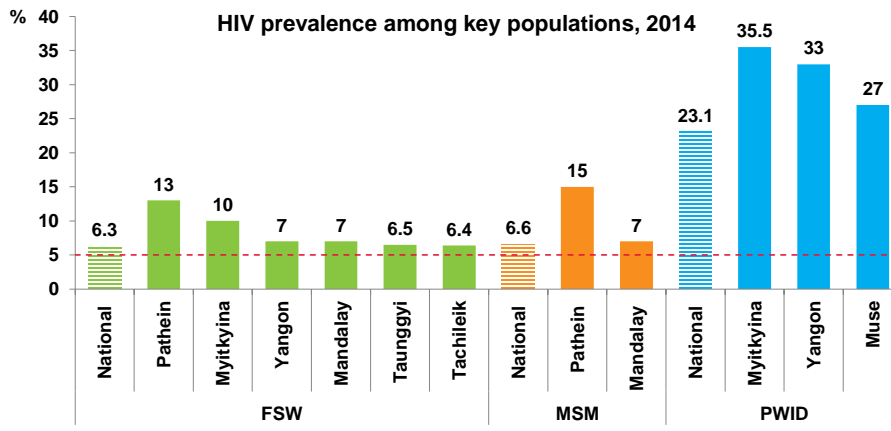
Sources: AEM model prevalence based on IBBS (PWID 2014, FSW & MSM 2015) and HSS 2014; Myanmar Spectrum, AEM 5.41 (2016)

University of Adelaide

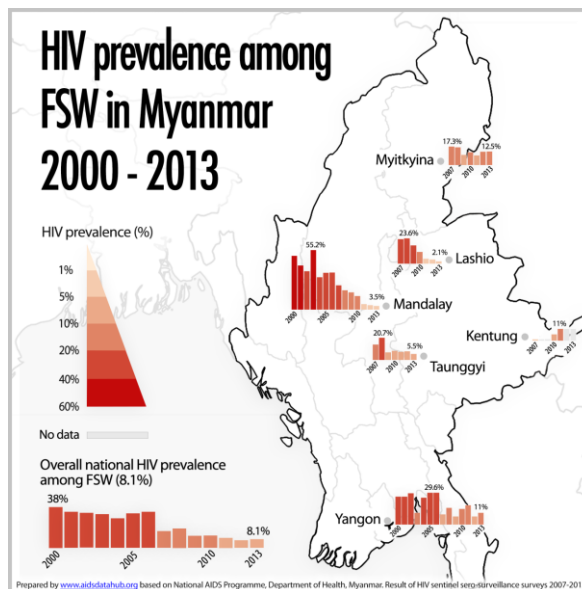
10



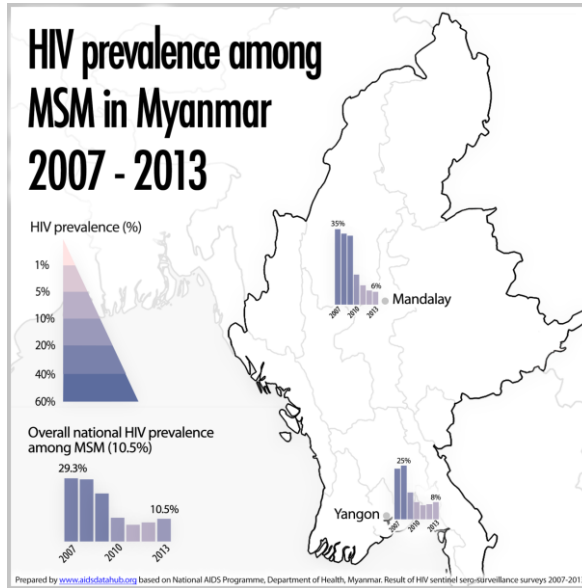
## National prevalence often masks the high prevalence in some geographical areas



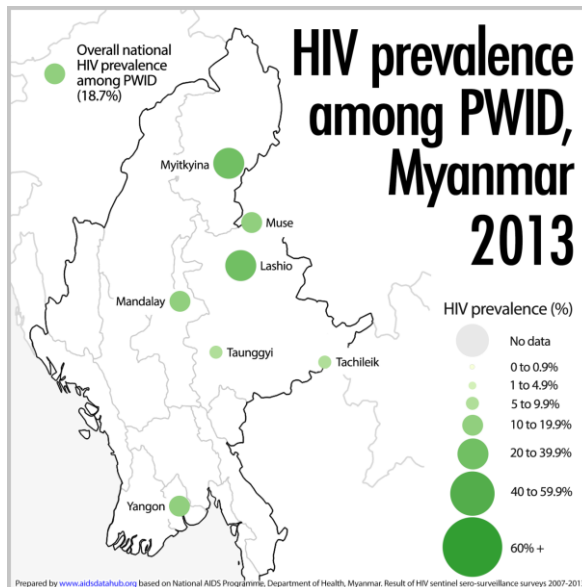
Source: Prepared by [www.aidsdatahub.org](http://www.aidsdatahub.org) based on National AIDS Programme, Department of Health, Ministry of Health and World Health Organization (2015). Results of HIV Sentinel Sero-surveillance 2014.







13



14



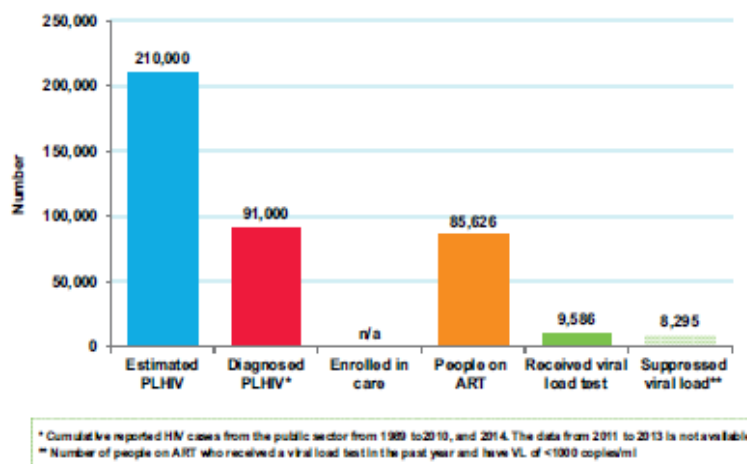
# HIV in Myanmar



## Outline

- Socio-economic context
- Epidemiology
- HIV cascade
- Testing
- Treatment
- Barriers
- Conclusions

## Cumulative cross sectional cascade for HIV treatment and care, 2015





# HIV in Myanmar



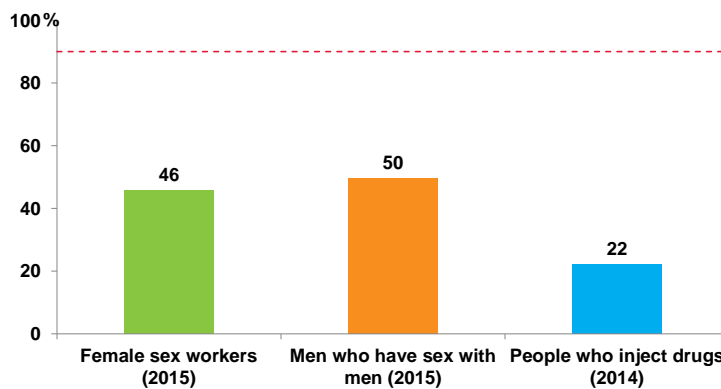
## Outline

- Socio-economic context
- Epidemiology
- HIV cascade
- **Testing**
- Treatment
- Barriers
- Conclusions

University of Adelaide

17

## HIV testing coverage among key populations, 2014-2015

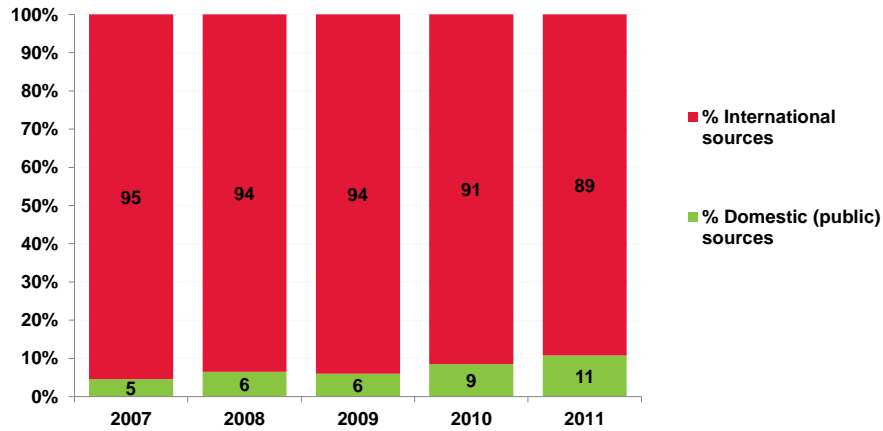


18

Source: Prepared by [www.aidsdatahub.org](http://www.aidsdatahub.org) based on 1) Myanmar Global AIDS Response Progress Reporting 2016; and 2) [www.aidsinfoonline.org](http://www.aidsinfoonline.org)



## Proportion of spending on HIV prevention programmes from domestic and international sources, 2007-2011



Source: Prepared by [www.aidsdatahub.org](http://www.aidsdatahub.org) based on [www.aidsinfoonline.org](http://www.aidsinfoonline.org)

## HIV in Myanmar

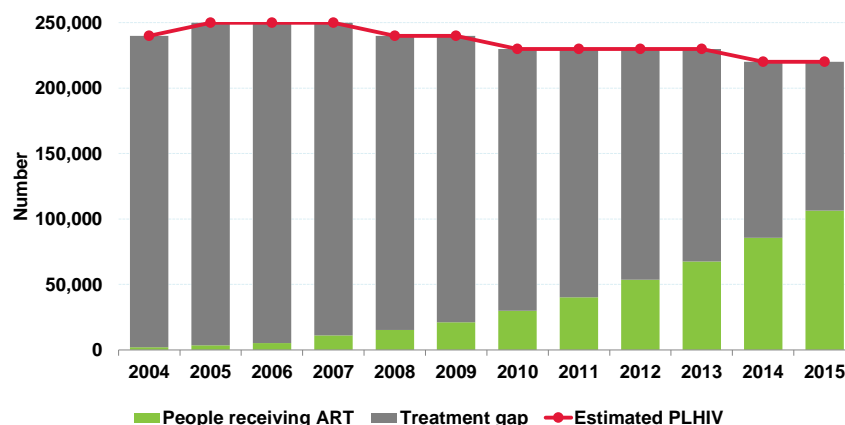


### Outline

- Socio-economic context
- Epidemiology
- HIV cascade
- Testing
- **Treatment**
- Barriers
- Conclusions



## Estimated PLHIV, people receiving ART and treatment gap, 2004 - 2015

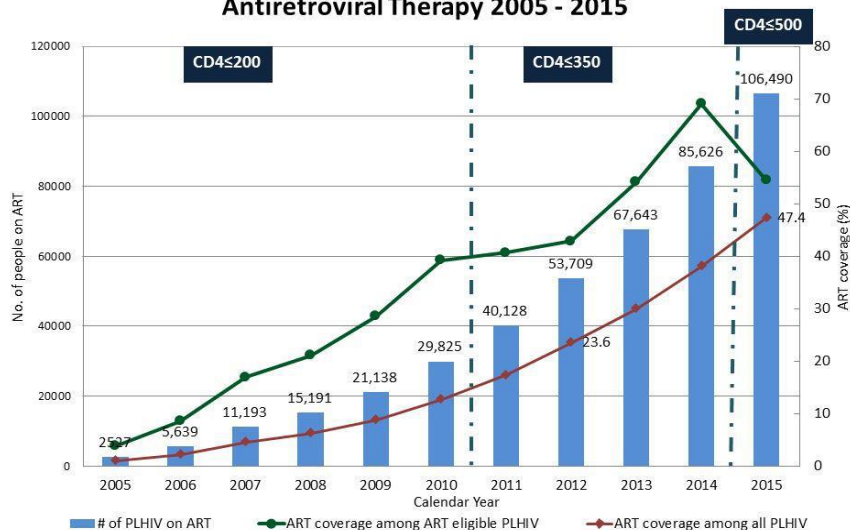


Source: Prepared by [www.aidsdatahub.org](http://www.aidsdatahub.org) based on 1) UNAIDS, (2016). HIV Estimates 2000-2015; 2) [www.aidsinfoonline.org](http://www.aidsinfoonline.org); and 3) Global AIDS Response Progress Reporting

21

## HIV in Myanmar

### Antiretroviral Therapy 2005 - 2015



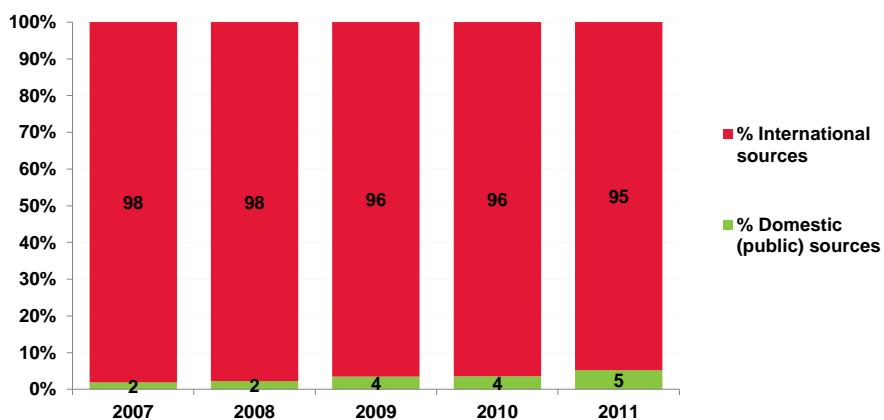
Source: ART programme data; Spectrum, April, 2016

University of Adelaide

22



## Proportion of spending on care and treatment from domestic and international sources, 2007-2011



Source: Prepared by [www.aidsdatahub.org](http://www.aidsdatahub.org) based on [www.aidsinfoonline.org](http://www.aidsinfoonline.org)

## HIV in Myanmar



### Outline

- Socio-economic context
- Epidemiology
- HIV cascade
- Testing
- Treatment
- **Barriers**
- Conclusions



## HIV in Myanmar



Criminalisation of same sex sexual activity



Compulsory detention of PWIDs



Criminalisation of sex work



Criminalisation of HIV transmission & exposure



HIV-related restrictions on entry, stay & residence

University of Adelaide

25

## HIV in Myanmar



### Outline

- Socio-economic context
- Epidemiology
- HIV cascade
- Testing
- Treatment
- Barriers
- **Conclusions**

University of Adelaide

26



## HIV in Myanmar



### Conclusions

- A significant HIV epidemic
- KAP activities are proscribed and stigmatised
- Significant barriers obstructing progress
  - social, economic, legal, fiscal
- Recent transition to semi-democracy may be transformative



27



THE UNIVERSITY  
*of* ADELAIDE